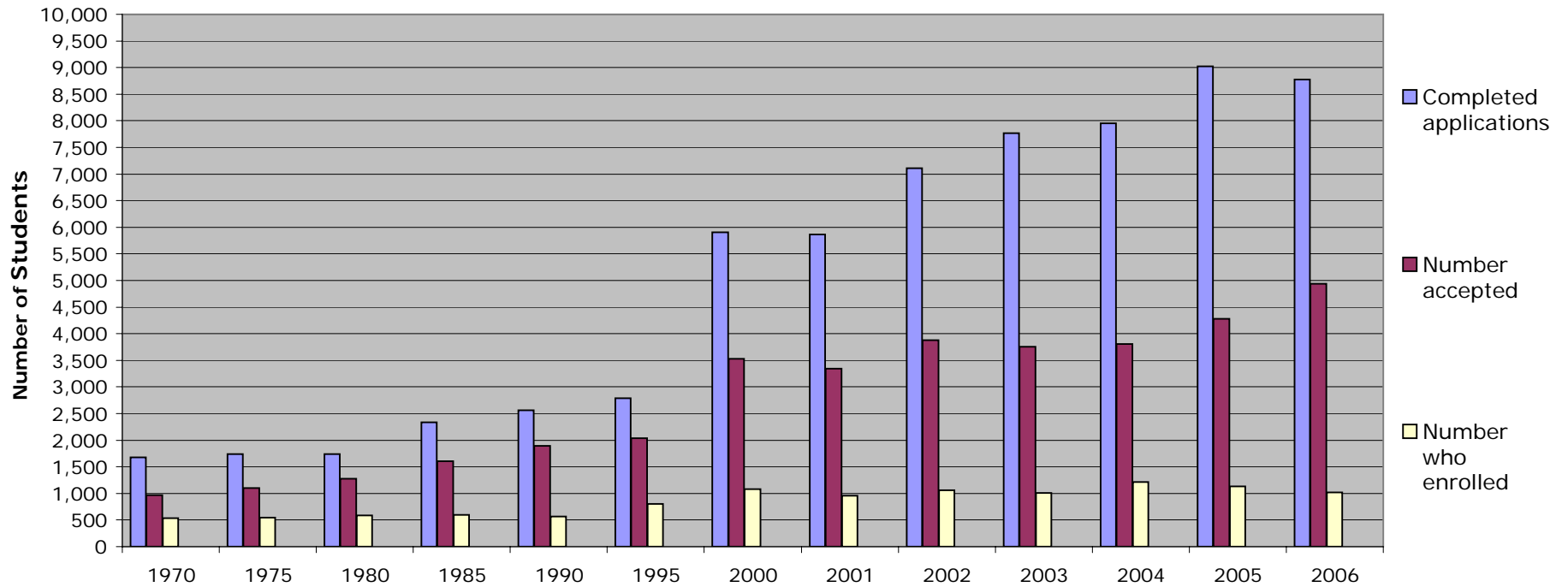


ADMISSIONS
~
FRESHMEN PROFILE

Full-Time Undergraduate Admissions Statistics
First-Time Freshmen: Fall Semester Benchmark

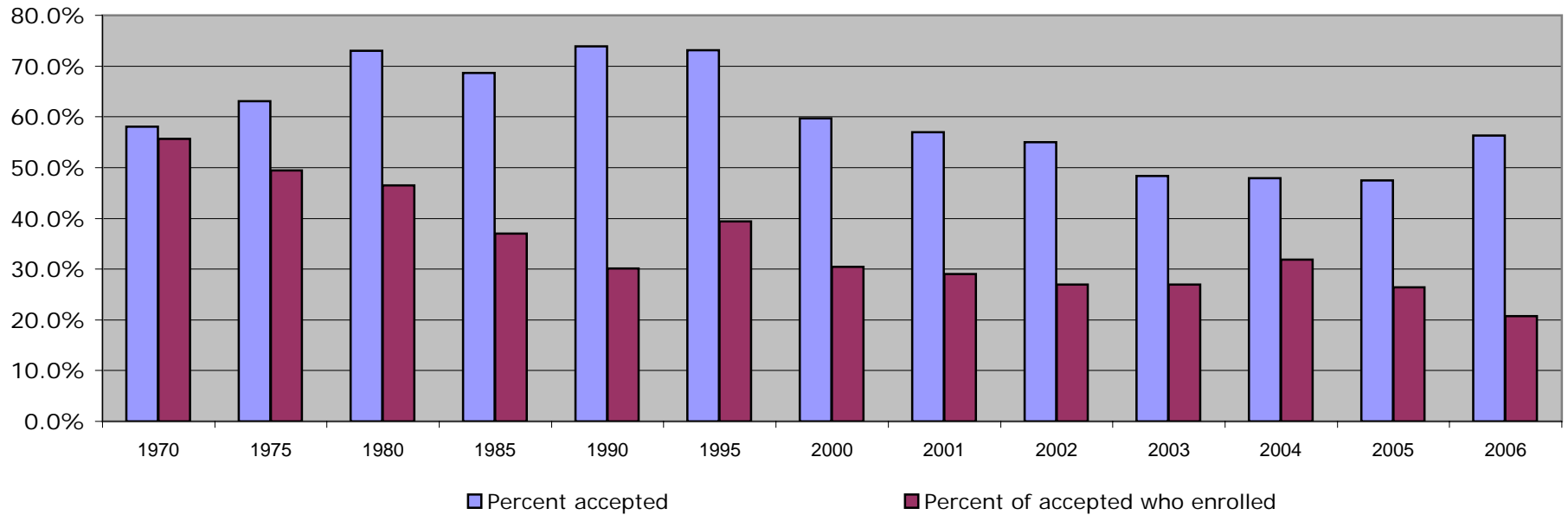
	1970	1975	1980	1985	1990	1995	2000	2001	2002	2003	2004	2005	2006
Completed applications	1,672	1,741	1,742	2,340	2,563	2,791	5,910	5,866	7,113	7,765	7,949	9,021	8777
Number accepted	970	1,099	1,271	1,607	1,894	2,042	3,530	3,343	3,877	3,753	3,809	4,282	4939
Number who enrolled	540	543	591	595	570	804	1,076	960	1,061	1,012	1,213	1,129	1022



Note: Data as reported in the Integrated Postsecondary Education Data System (IPEDS) Institutional Characteristics Survey
 Data Source: Admissions Office

Undergraduate Admissions Acceptance & Enrollment Rates First-Time Freshmen: Fall Semester Benchmark

	1970	1975	1980	1985	1990	1995	2000	2001	2002	2003	2004	2005	2006
Percent accepted	58.0%	63.1%	73.0%	68.7%	73.9%	73.2%	59.7%	57.0%	55.0%	48.3%	47.9%	47.5%	56.3%
Percent of accepted who enrolled	55.7%	49.4%	46.5%	37.0%	30.1%	39.4%	30.5%	29.0%	27.0%	27.0%	31.8%	26.4%	20.7%



Note: Data as reported in the Integrated Postsecondary Education Data System (IPEDS) Institutional Characteristics Survey
Data Source: Admissions Office

Freshmen Enrollment by Race/Ethnic Category and Gender

Fall 2006				
<u>Race/Ethnicity</u>	<u>Headcount</u>	<u>FT</u>	<u>PT</u>	<u>%</u>
Black, non-Hispanic	46	45	1	4.5%
American Indian or Alaskan Native	1	1	0	0.1%
Asian or Pacific Islander	32	32	0	3.1%
Hispanic	44	44	0	4.3%
White, non-Hispanic	851	850	1	83.1%
Non-resident alien	14	14	0	1.4%
Race/ethnicity unknown	36	36	0	3.5%
Total	1024	1022	2	100.0%
Subtotal Minority Enrollment	123	122	1	12.01%
<u>Gender</u>	<u>Headcount</u>	<u>FT</u>	<u>PT</u>	<u>Percent</u>
Men	504	504	0	49.2%
Women	520	518	2	50.8%
	1024	1022	2	100.0%

Note: Data includes full and part time degree and non-degree seeking freshmen undergraduates.

Note: Percentage indicates the percent of total freshmen headcount including full and part time students.

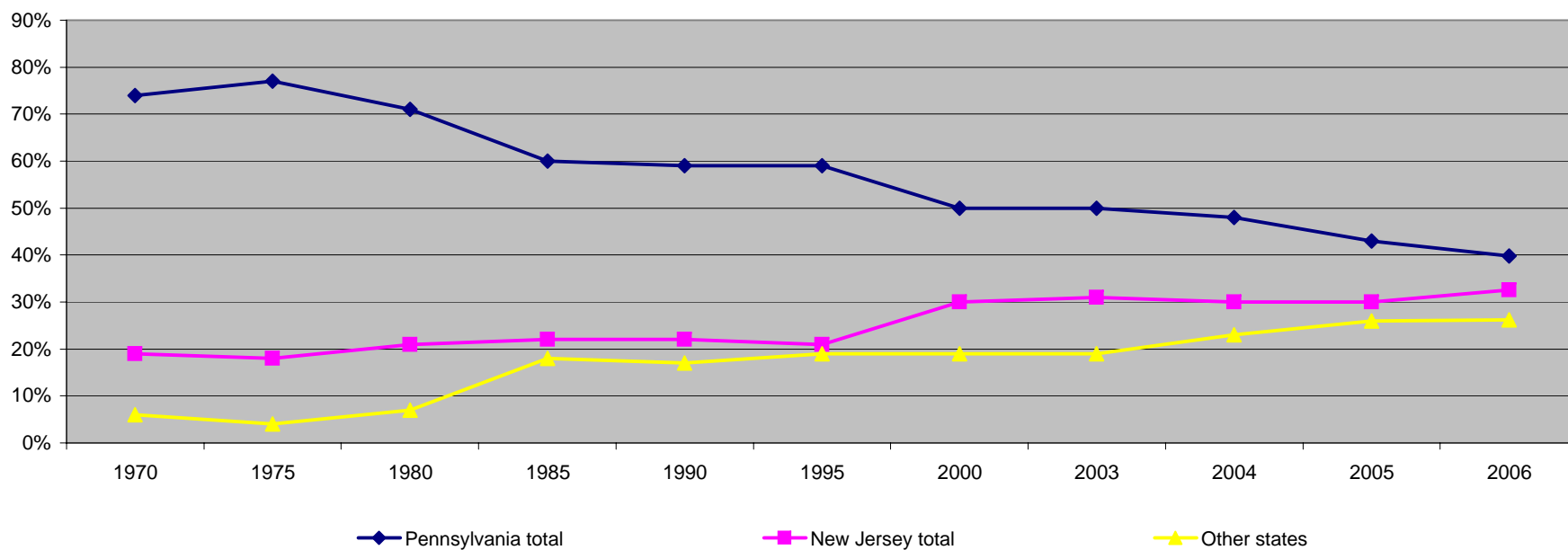
Note: Minority student data include Black, non-Hispanic, American Indian, Alaskan Native, Asian or Pacific Islander, and Hispanic. Non-Resident aliens are not included; IPEDS defines full-time undergraduates as 12 or more credits.

IPEDS Fall Enrollment Fall benchmark of October 15th.

Data Source: Registrar

Freshmen Enrollment - Geographic Distribution

By Area*	1970	1975	1980	1985	1990	1995	2000	2003	2004	2005	2006
Philadelphia area	70%	73%	66%	50%	50%	49%	37%	36%	35%	19%	19.7%
Pennsylvania total	74%	77%	71%	60%	59%	59%	50%	50%	48%	43%	39.8%
New Jersey total	19%	18%	21%	22%	22%	21%	30%	31%	30%	30%	32.6%
Other states	6%	4%	7%	18%	17%	19%	19%	19%	23%	26%	26.2%
Other countries	0.8%	0.7%	0.8%	0.6%	1.8%	1.3%	0.4%	0.3%	0.2%	0.7%	1.4%



Philadelphia area: Bucks, Chester, Delaware, Montgomery, and Philadelphia counties

*Full time, undergraduate day freshmen profile.

Data Source: IPEDS Enrollment Report/Registrar